

# Budget development



Budget development consists in estimating purchasing volumes, production times and labour from the forecasts of sold quantities which are expressed monthly in a timeline of several months or several years.

The technical data and the rules of sourcing implemented by date will be used.

The system is able to carry out checks on data from the past.

The Budget development module enables to:

- Define prediction games

- Configure drill-down rules (vehicle, level of finish, motorisation)

- Manage the budget versions and calculations (purchasing, sales, system loads and human resources).

## Generalities

### Budget objectives

The objectives are to use forecast data to estimate machine loads or the workforce and to have the volumes to supply per supplier in order to plan, invest and negotiate.

### Data sources of the budget

The input data of commercial forecasts is the result of an analysis of the information provided by the commercial department, in accordance with the volumes announced by the customer. This data is uploaded manually or imported. It can be extrapolated from the histories of invoicing or production.

### The budget as a comparison tool

Thanks to the software, as many budget versions as wanted can be managed. Each budget version is built based on one or several prediction games and for each game, it is possible to determine the period to be

taken into account in order to load the budget. Once calculated, the budget can be compared to others (BI).

## The baseline associated to the budget

- Buyer structure (Customers)

- Program files and tariff management (customer contracts)

- Supplier structure

- Supply program files (supplier contracts) and tariffs

- Articles and processes (routings, bills of materials)

- Sourcing rules

The statistical Segmentation of the products of the customers and of the suppliers will allow to refine the analyses of the results by setting up criteria of groupings.

## Budget implementation

The process of budget implementation is simple:

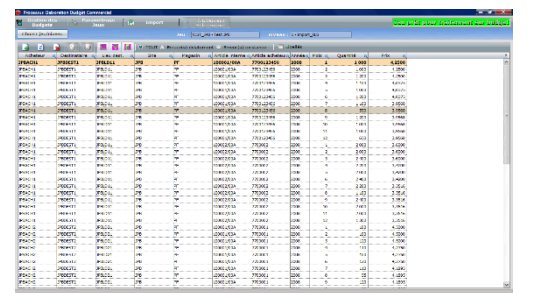
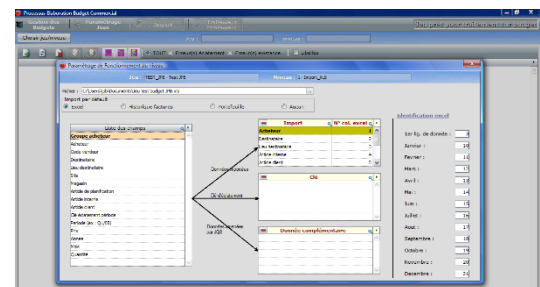
- Establishment of a budget version

- Preparation of one or several prediction games

- Use of drill-down rules and distribution keys

- Importations

- XLS Files



Customer portfolio

Invoice history

Once the loading of input data is done, integrity monitoring is mandatory est obligatoire (before)

The processing of budget calculation (each request is taken care of and there is a drill-down according to the production path).